

Position
Transducers and
Rotary Sensors in
Mobile Applications



Precision you can trust ...anywhere on earth.

Novotechnik offers not only a broad range of standard products, but also the option of customer-specific sensor solutions.

Our contactless sensors are developed for high **EMC protection classes** which meet the requirements in mobile driven machines. In this process, both industry-specific and customer-specific standards are realised. Potentiometers as passive systems are very insensitive to electromagnetic influences anyway.

Depending on their technology and design, Novotechnik sensors can be used for **temperature ranges** from -55°C to $+140^{\circ}\text{C}$. They do not just satisfy standard **protection classes** up to IP69K, they are also tested for the most demanding requirements, which exceed the pure standard specifications. This also includes the simultaneous influences of temperature, humidity and fluids.

Many series are **redundant** and are available in SIL classes up to SIL3. In the area of **functional safety**, our many decades of experience as a supplier to the automotive industry are especially apparent in safety-relevant applications. The sensors are practice-oriented and are resistant to all occurring media depending on the application. These also include oil, fuel, saltwater, etc. according to customer specifications.

A special focus is the **durability** of the sensors when exposed to the shocks and vibrations which occur in mobile driven machines.

Passive potentiometers are a simple solution for use in potentially explosive environments. Certain **ATEX** zones can easily be covered by using protective circuits for the avoidance of combustible pulses.



Non-contacting, touchless or potentiometric Rotary Sensors RSC, RFA, RFC, SP

Application

Robust, compact Rotary Sensors for direct mounting or integration in angle measuring systems

Advantage

- transmissive measurement possible
- cost-effective
- customizable



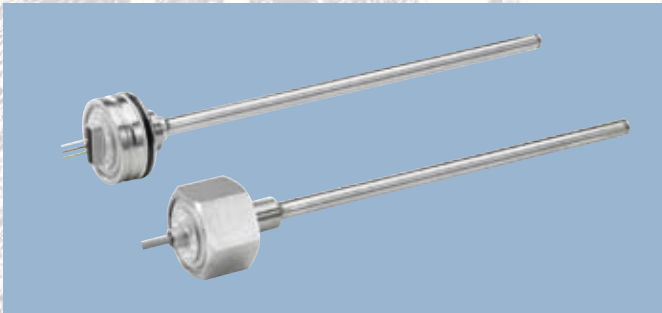
Non-contacting, touchless or potentiometric Rotary Sensors RSX, RFX, IPX

Application

Angle measurement under harsh application conditions

Advantage

- suitable for external applications even at exposed locations
- extremely robust and compact dimensions
- developed for highest reliability



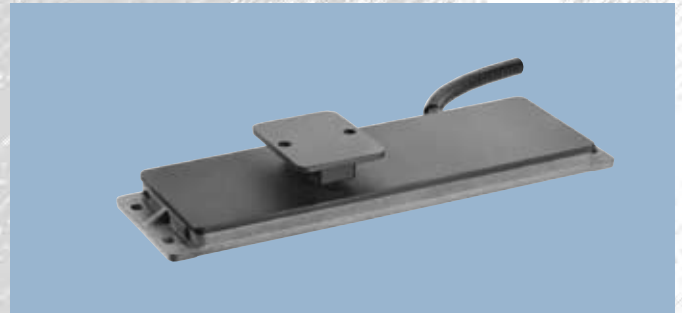
Touchless Linear Transducers TIM

Application

Rod-shaped Sensor for direct integration into the pressurized zone of hydraulic and pneumatic cylinders

Advantage

- high-precision, direct, absolute and analog linear measurement in extremely rough environment
- welded stainless steel mechanics including electronics for complete installation in a cylinder
- high compressive resistance and unlimited mechanical life-time



Application specific, touchless Linear Transducer LAS

Application

Easy mounting e.g. on synchronizing or steering cylinder with through going piston rod

Advantage

- inductive measuring principle; insensitive against electrical and magnetic fields
- complete encapsulated; high mechanical stability; protection class IP69K; chemical resistance
- redundant sensor with crossed gradient; security level 3; performance level d



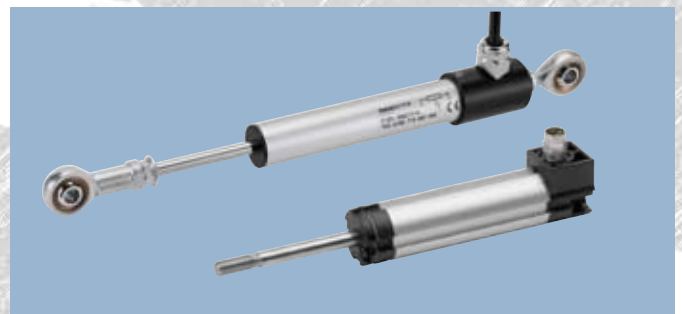
Potentiometric Linear Transducers LWG, LWX

Application

Pivot heads gimbal-mounted between two connecting points

Advantage

- Long-life precision potentiometer with double-mounted 10 mm stainless steel actuating rod
- patented pressure difference compensation system for protection class up to IP67 even in action
- Heavy-Duty version in all-metal housing, with shaft-protector and exchangeable sealing



Potentiometric Linear Transducers, TX2, TEX

Application

Assembling with various mounting options in different applications

Advantage

- Long-Life precision potentiometer with very high variance for optimized customer solutions
- Linear Transducer with or without restoring spring; protection class IP 40 up to IP67
- Heavy-Duty version in all-metal housing with sintered brass bearing and double sealing

**60 years Novotechnik:
Precision you can trust ... anywhere on earth.**

novotechnik
Siedle Group

Novotechnik
Messwertaufnehmer OHG

Postfach 4220
73745 Ostfildern (Ruit)
Horbstraße 12
73760 Ostfildern (Ruit)
Telefon +49 711 4489-0
Telefax +49 711 4489-118
info@novotechnik.de
www.novotechnik.de

© 03/2010
Art.-No. 062 009
Printed in Germany



Wherever positions and angles need measuring with the utmost precision, sensors from Novotechnik are the first-choice solution. The expertise in measuring technology that we have amassed in the course of 60 years is just one of the secrets behind a success story that began back in 1947:

The other cornerstones of our success include a passion for technology and an obsession with precision and reliability. Then there is our delight in devising solutions, coupled with a fascination with new materials and production methods. And of course there is our constant awareness of the importance of providing sound advice and top-class service, as we strive day-by-day to optimise our measuring systems.

But the true secret of our success has always been our passionate pursuit of the best possible solution for each individual customer application. And to ensure that we remain the first-choice partner for our customers, in future we will be staying focused on the strengths that made us the successful company that we are today.

Leading OEMs from a whole spectrum of industries put their trust in position transducers and rotary sensors made by Novotechnik: be it general engineering, hydraulics, pneumatics, measuring technology, medical technology or automotive engineering. And talking of the automobile industry, every day more than 30,000 of our sensor components are built into new cars.

Representatives

Europe

Austria, Baltic States, Belgium, Bosnia-Herzegovina, Croatia, Czech Republik, Denmark, Finland, France, Great Britain, Hungary, Italy, Luxembourg, Montenegro, Netherlands, Norway, Poland, Portugal, Russia, Serbia, Sweden, Switzerland, Slovakia, Slovenia, Spain, Turkey, Ukraina

South Africa

Asia

China, India, Japan, Korea, Singapore, Taiwan

Middle East

Iran, Israel

Australia

Brazil

USA, Canada, Mexico